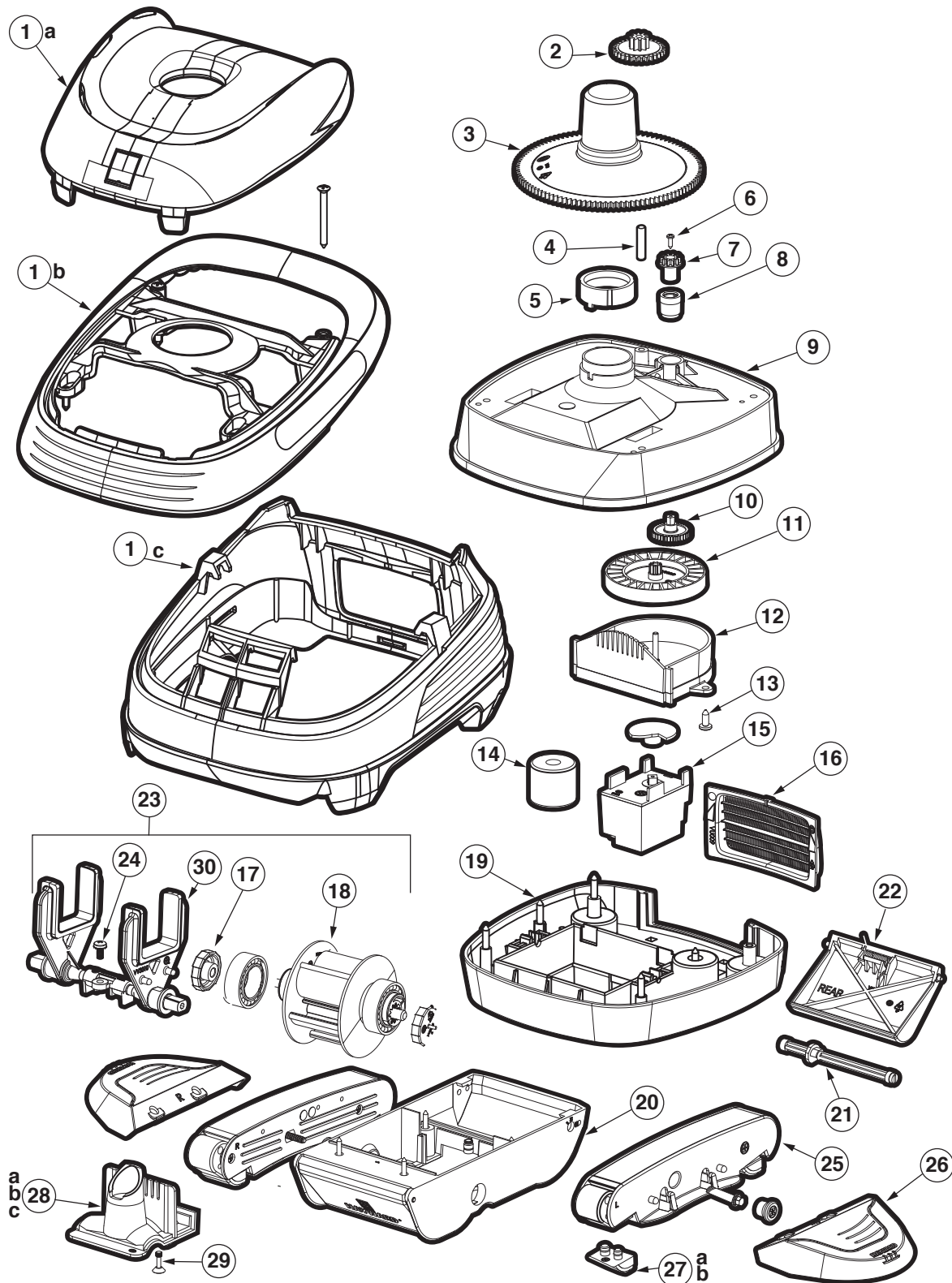


# PoolVac V-Flex™

## REPLACEMENT PARTS

### Parts Diagram



Cleaners

### Parts Listing

Ref. No.	Part No.	Description	Ctn. Qty.
1a	HSXV017SA-237	Assembly, Cover-PV V-Flex	1
1b	HSXV018SA-236	Assembly, Handle-PV V-Flex	1
1c	AXVU015-237	Assembly, Shell and Skirt, PV V-Flex	1
2	AXV301	Inter Gear	25
3	AXV070	Cone Gear, Clear	10
4	AXV309	Inter Gear Shaft	50
5	AXV306	Cone Gear Bushing	25
6	AXV068	Spindle Gear Screw	50
7	AXV303	Cone Spindle Gear	25
8	AXV066A	Cone Spindle Gear Bushing	25
9	HSXV060R237	Upper Middle Body	10
10	AXV064A	Medium Turbine Drive Gear	25
11	AXV062C	Medium Turbine	25
12	AXV009	Medium Turbine Case/Axle Assembly	25
13	AXV065P	Upper Body Screw (6 pack)	25
14	AXV054FH	Float Kit	25
15	AXV408P	Gear Box Assembly	25
16	AXVU009-237	Screen Kit	50
17	HSX304060	Turbine Shaft Retainer (2 pack)	25
18	HSXVV3000SAC	Turbine Kit (turbine and 2 turbine bearings)	25
19	HSXV050C237	Lower Body, Housing	10
20	AXV230D-237	Open Lower Body	10
21	AXV031B	Flap Adjuster	25
22	AXV434-237	Flap Kit (2 flaps, front and rear springs)	50
23	HSXVV3010SA	Kit, Turbine/A-Frame 5 Vane	10
24	AXV313	Lower Body Screw	25
25	AXV417-237	Pod Kit	25
26	AXV604-237	Wing Kit	50
27a	AXV414P	Shoes, Concrete (4 pack)	25
27b	AXV413P	Shoes, Vinyl (4 pack)	25
28a	AXV603	Access Cover Assembly, Concrete	25
28b	AXV603A	Access Cover Assembly, Vinyl	25
28c	AXV603CLO	Access Cover Assembly, Concrete – Large Skids	25
29	AXV314P	Captive Screw with Clip	25
30	VVX3010SA	A-Frame	10